

**FALCON
METAL
RESOURCES
BOTSWANA**



**FALCON COPPER
EXPLORATION LTD**

PL0245/2025 - INVESTOR PRESENTATION
GHANZI DISTRICT, BOTSWANA | 165.42 KM² |
JULY 2025



PROJECT OVERVIEW

- Located in the prolific Kalahari Copper Belt (KCB)
- Excellent geological and geophysical datasets available
- Hosted in Ngwako Pan, D'kar, and Mamuno Formations
- Government support and mining-friendly jurisdiction
- Regionally aligned with known Cu-Ag deposits



GEOLOGICAL SETTING

- Sediment-hosted Cu-Ag mineralization model.
- Stratigraphic & structural traps similar to known mines in the area and Central African Copperbelt.
- High prospectivity near known copper occurrences

A close-up photograph of copper ore, showing a rough, crystalline texture with various shades of brown, orange, and grey. The image is used as a background for the title.

EXPLORATION STRATEGY

- Three-Year Phased Program
- Data-driven targeting and progressive de-risking
- Focused on shallow mineralized zones typical of the KCB
- Integrates mapping, geochemistry, geophysics, and drilling

YEAR 1 – TARGET GENERATION (\$2,6M)

Objectives:

Identify anomalies & prioritize drill targets

Activities:

- Desktop compilation & historic data integration

- Geological mapping (1:25,000)
- Soil sampling (~1,500 samples)
- Ground magnetics (50 km²)
- Interpretation & target modeling

YEAR 2 – TARGET TESTING (\$4.2M)

Objectives:

Confirm mineralization via drilling

Activities:

- IP/CSAMT survey (10 line-km)
- RC Drilling (1,000 m)
- Assays & geological logging
- Lithological & structural modeling

YEAR 3 – RESOURCE DEVELOPMENT (\$7.2M)

Objectives:

Define resource & assess economic potential

Activities:

- Infill RC/DD drilling (2,000 m)
- Metallurgical testing & density measurements
- Resource modeling (JORC/NI43-101 compliant)
- Environmental baseline study

TOTAL 3-YEAR BUDGET

Year 1: \$2,6M

Year 2: \$4.2M

Year 3: \$7.2M

Total: \$13M



FUNDING STRUCTURES

Option 1: Staged Equity Investment

- Equity issued per stage based on milestones
-

Option 2: Earn-In Agreement

- Up to 51–70% earned based on milestone spend
-



INVESTMENT HIGHLIGHTS

- High-potential copper project in a proven district
- Strong market demand for copper (green energy transition)
- Early-stage entry with large upside potential
- Low-cost phased program with staged investment risk
- Botswana: Tier-1 African mining destination

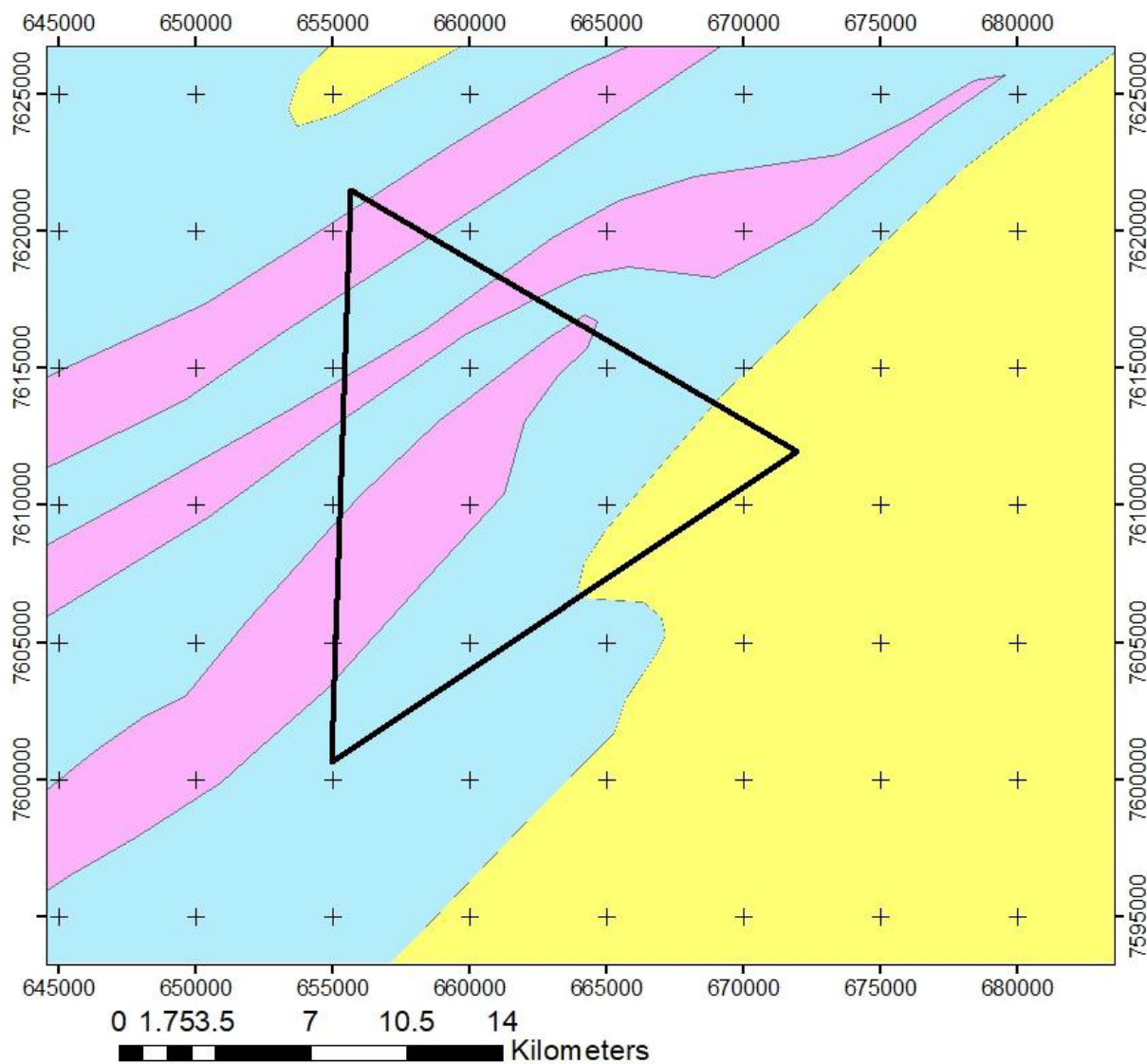
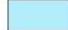



Figure 1:
Geology Map
of PL0245/2025


Legend

 PL245/2025

Lithology

 D'kar Formation

 Mamuno Formation

 Ngwako Pan Formation

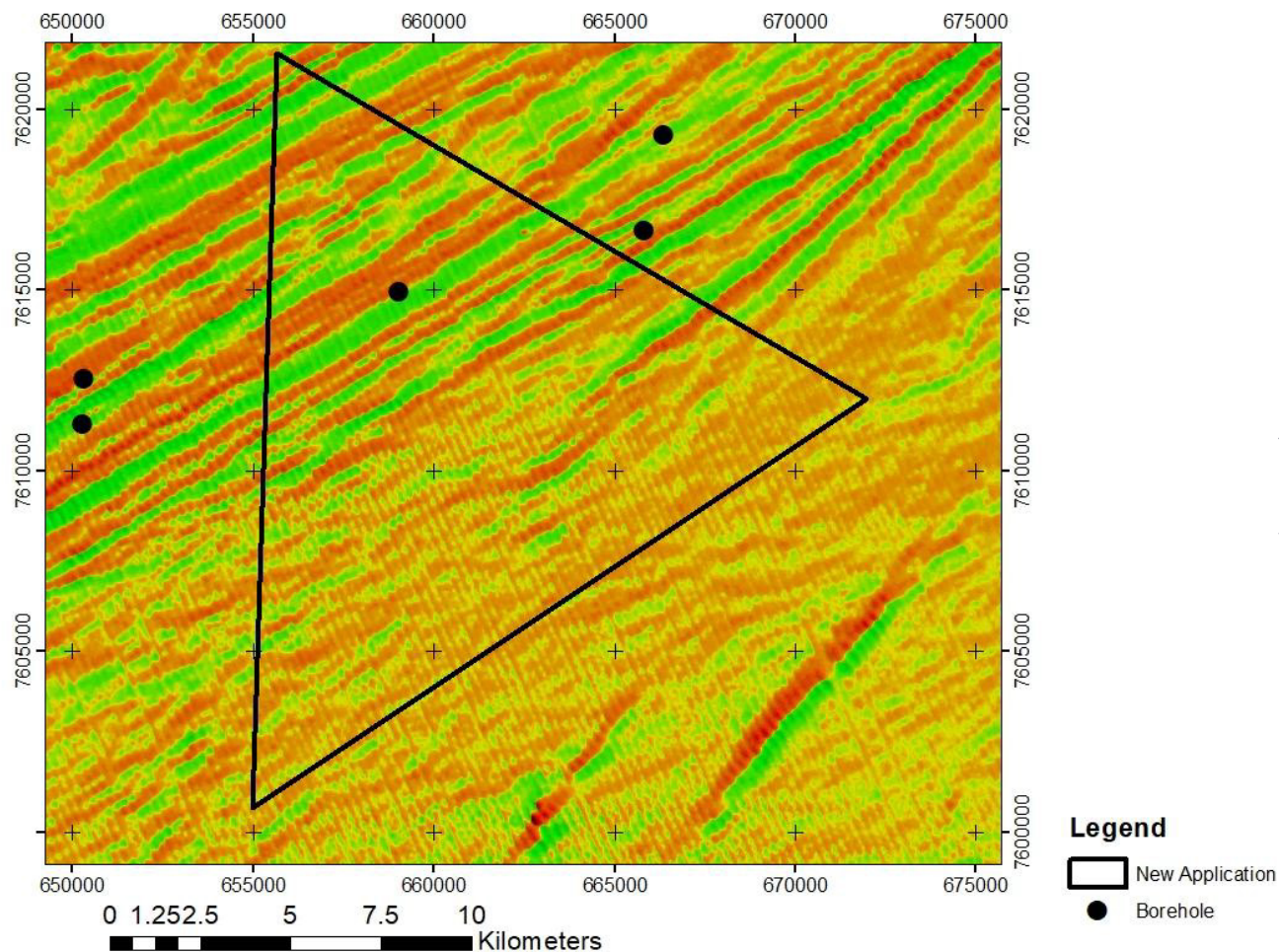


Figure 2:
Airborne Total
Magnetic Intensity first
vertical derivate over
PL0245/2025

LET'S DISCUSS HOW WE CAN PARTNER TO UNLOCK BOTSWANA'S COPPER POTENTIAL

Contact:

Falcon Metal Resources Botswana

Email: info@falconmetalresources.com

Phone: (+267) 248 4016 (+267)

73 610 662/ +267 72617482

