

Confidential | For information purposes only

## Falcon Metal Resources Botswana Corporate Presentation 2026

---

A Botswana-based mineral portfolio platform focused on disciplined asset origination, advancement, and capital-market alignment.



**Rank: no. 4**  
The RPI African  
Policy Index 2025

# IMPORTANT NOTICE AND DISCLAIMER

- This presentation has been prepared by Falcon Metal Resources Botswana ("FMRB") for informational purposes only and does not constitute or form part of any offer, solicitation, or invitation to subscribe for, purchase, or otherwise acquire any securities or assets. The information contained herein is provided in summary form and does not purport to be complete. While the information has been prepared in good faith and is believed to be accurate at the time of preparation, Falcon makes no representation or warranty, express or implied, as to the fairness, accuracy, reliability, or completeness of the information, opinions, and conclusions contained in this document.
- To the fullest extent permitted by law, FMRB, its directors, officers, employees, agents, and advisors expressly disclaim all liability and responsibility for any direct or indirect loss or damage (including without limitation any liability arising from fault or negligence) arising from the use of this presentation or its contents or otherwise arising in connection with it. This document is not intended to be, and should not be construed as, financial product advice, legal advice, tax advice, or investment advice. Recipients of this

presentation are advised to conduct their own due diligence and seek appropriate professional advice before making any investment or commercial decision.

- This presentation contains "forward-looking statements," which may include, but are not limited to, statements with respect to the future exploration plans, objectives, projections, timing and amount of estimated future results, exploration expenditures, potential resource quantities or grades, expected outcomes of exploration programs, and other future events or developments. Words such as "expects", "anticipates", "intends", "plans", "believes", "estimates", "could", "may", "will", "should", and similar expressions are intended to identify such forward-looking statements.
- Forward-looking statements are based on the Company's current expectations and assumptions and are subject to various risks, uncertainties, and other factors, many of which are outside the control of Falcon. These include, among others, risks related to exploration success, availability of funding, changes in commodity prices, regulatory developments, community relations, environmental conditions,

technical challenges, and geopolitical risks. Actual results may differ materially from those expressed or implied in forward-looking statements, and no assurance can be given that such statements will prove to be accurate.

- Any reference to potential quantity and grade is conceptual in nature. There has been insufficient exploration to define a mineral resource in accordance with any recognized reporting standard (e.g., JORC or NI 43-101), and it is uncertain whether further exploration will result in the delineation of a mineral resource.
- FMRB does not undertake to update or revise any forward-looking statements or other information contained in this presentation to reflect new events or circumstances, except as required by applicable law.



## ABOUT US

Falcon Metal Resources Botswana is a privately held mineral portfolio platform operating exclusively within Botswana.

The Company applies a disciplined, capital-markets-oriented approach to the identification, acquisition, and advancement of mineral assets across copper, gold, and select strategic commodities.

Falcon's strategy prioritises jurisdictional quality, district-scale opportunity, and governance-led execution. Assets are advanced through defined technical and commercial milestones and positioned for multiple capital pathways, including strategic partnerships, asset-level transactions, and public market listings.

As Falcon progresses toward capital markets, the Company operates with public-company discipline in disclosure, portfolio construction, and risk management.

# MANAGEMENT TEAM



**Mr Kago Bitsang Stimela**  
*Founder & Chairman*

A seasoned entrepreneur and project leader with over 15 years of executive and operational experience across engineering, security, and resource sectors. He holds multiple professional qualifications in marketing, project management, and security management, along with specialised certifications in diamond exploration and sorting, including training from De Beers Group.



**Mr Khumoetsile Dikupa**  
*Chief Exploration Officer*  
**BSc in Geology**

A seasoned exploration geologist with over 20 years of experience across Southern Africa, specialising in mineral exploration strategy, project management, and resource estimation. His career includes senior roles at BCL and African Copper PLC, where he managed multicountry exploration programs, drilling operations, and mineral resource development across a range of commodities including copper, nickel, diamonds, and uranium.



**Mr Omphile Gabriel Chite**  
*Chief Finance Officer & Secretariat*  
**AAT/ACCA**

Former Bank member, an accomplished finance executive with over 13 years of experience in accounting, financial analysis, credit assessment, and business management. Holds an AAT qualification and is currently advancing through the ACCA program, combining technical expertise with strategic financial oversight to support Falcon Metal Resources' growth and operational excellence.



**Mr Onalethata Itseng Gubago**  
*Chief Technical Advisor & Lead Geophysicist*  
**BSc in Geophysics, BSc In Physics**

Exploration geophysicist with nearly 20 years' experience in diamond, gold, and base-metal exploration. Former De Beers Holdings Botswana geophysicist and Managing Director of Geosphere Solutions. Provides technical direction and innovation in Falcon's exploration programs.



# BOTSWANA OVERVIEW:

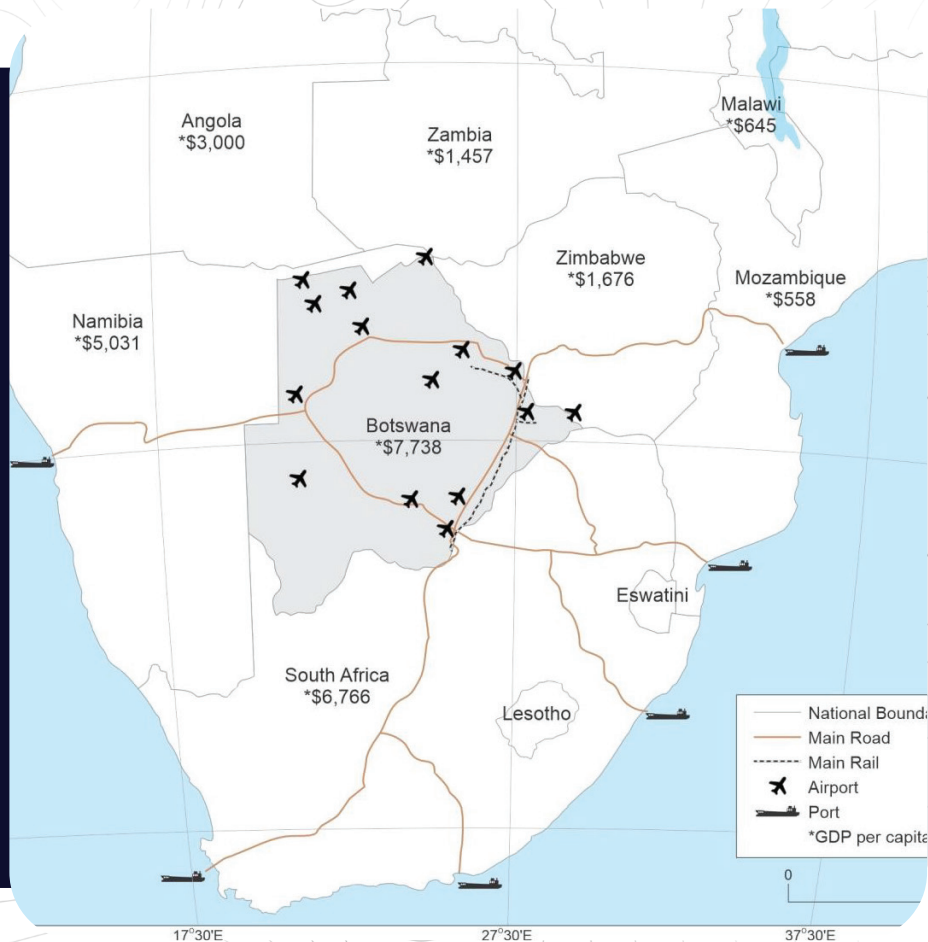
## A RESOURCE-RICH, WORLD-CLASS MINING DESTINATION

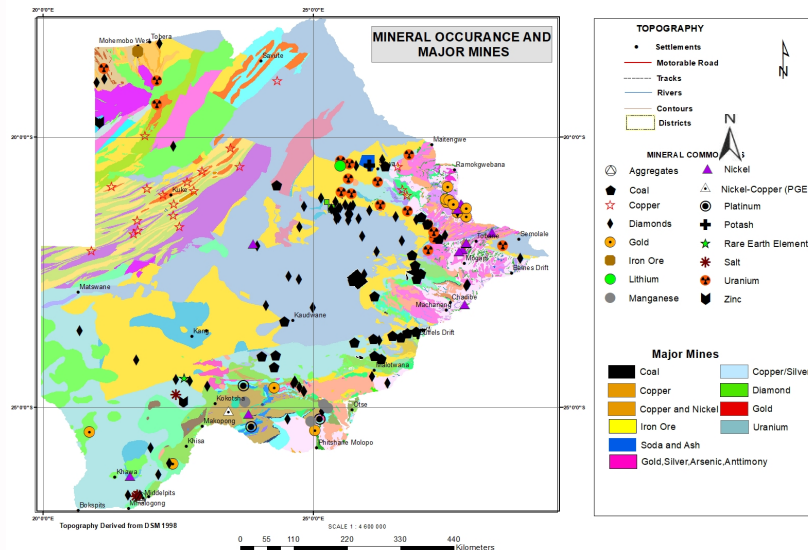
### Botswana: A Tier-One Mining Jurisdiction

Botswana is recognised as one of Africa's most stable and mining-friendly jurisdictions, offering policy certainty, regulatory transparency, and long-standing support for responsible mining investment.

The country benefits from a favourable fiscal regime, established infrastructure, and a skilled workforce developed through decades of large-scale mining operations. Recent policy measures, including reduced copper royalties, further support exploration and development investment.

Botswana's under-explored greenstone, kimberlite, and sediment-hosted copper belts provide a compelling environment for disciplined, long-term mineral development.





# BOTSWANA MINERAL ENDOWMENT

Botswana hosts a diverse and well-endowed geological landscape, comprising Archean greenstone belts, Proterozoic sediment-hosted copper systems, and world-class kimberlite provinces.

The country has a proven track record of large-scale mineral discoveries and long-life mining operations across diamonds, copper, nickel, gold, and associated base metals.

Significant portions of Botswana remain under-explored by modern standards, providing opportunity for systematic, district-scale mineral development within a stable and well-regulated jurisdiction.

This geological endowment underpins Falcon's portfolio strategy, which prioritises scale, belt-level exposure, and alignment with commodities of long-term strategic relevance.

# 1. ORAPA DIAMOND FIELD: PL0181/2024

Key 3 tenements are located in the Orapa District that is a proven, resource-rich region with established mining infrastructure. Current total land package of 110.19 km<sup>2</sup> (11,019 ha).

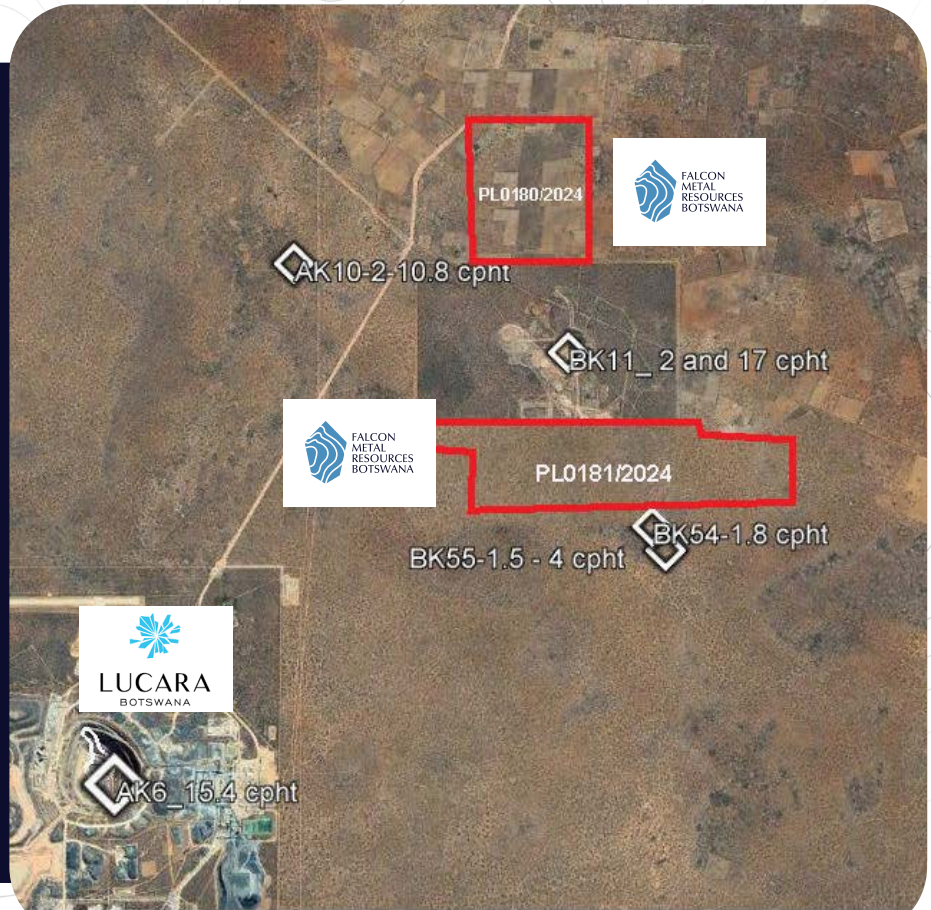
## Regional Geology:

Proven kimberlite belt.

The prospect area is mainly covered and truncated by both late and post Karoo Basalts and Ecca sediments.

Land surface of the pipes represents a close level of the original level of the surface of kimberlite emplacement.

There is limited overburden of the Karoo sands in the area.



# ORAPA DIAMOND FIELD

## - PL180/2024, PL181/2024

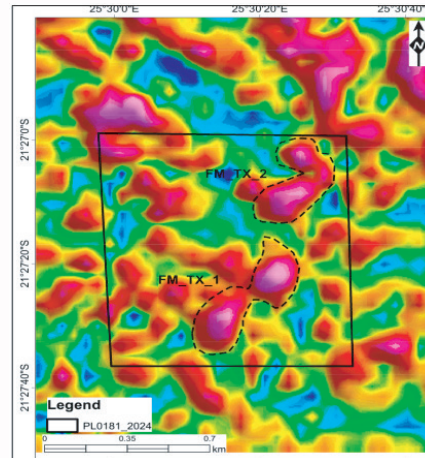
PL180/2024, PL181/2024 are located within 2km of Lucara's Karowe Mine (AK-6), a high value diamond producer with historical Recoveries namely Sewelo (1758cts/2019), Lesedi la Rona(1109cts), Constellation (813cts) and lately Motswedi (2488cts).

Commodity: Diamonds

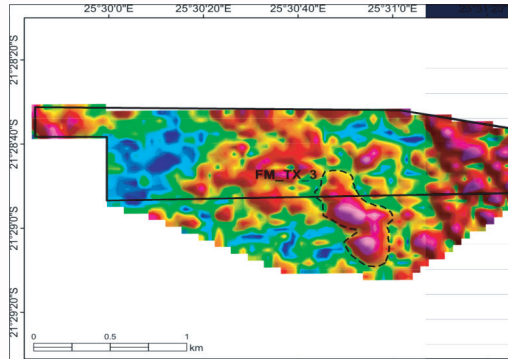
Tenure: 3 years (2024–2027)

Prior Work: High level magnetic data review and re-interpretation conducted on PL181/2024. Hosts BK-55 kimberlite, highly prospective. Modelling conducted and targets defined.

NEXT STEP: FIRST PASS DRILLING Q1 2026



PL180/2024



PL180/2024



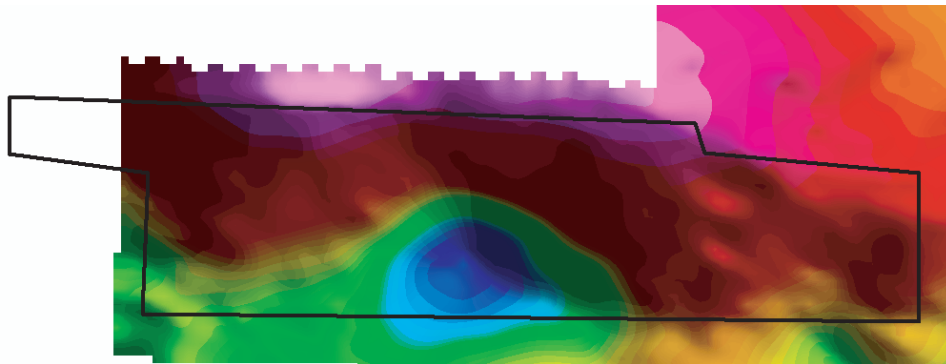
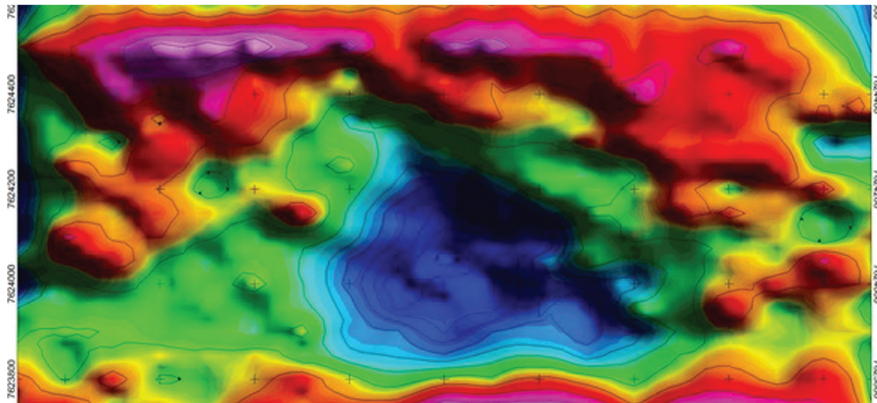


Figure 15:  
Ground gravity  
over PL181/2024

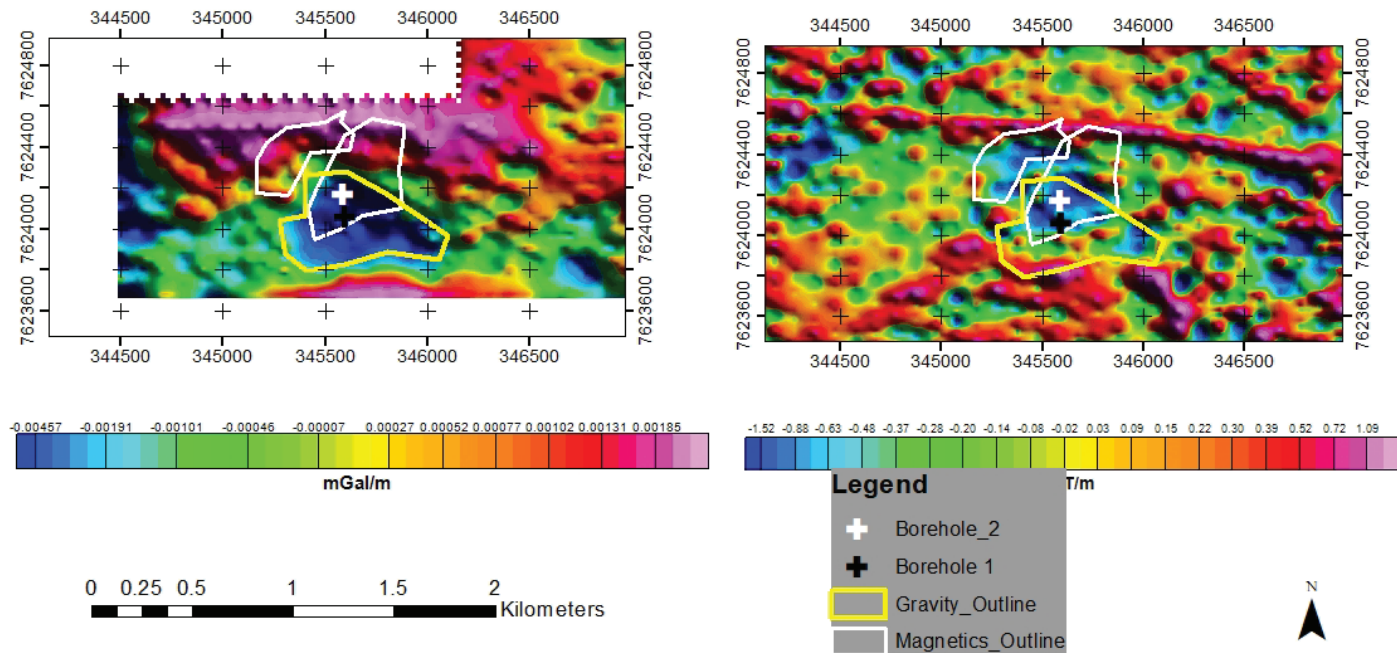


Figure 16. PL0181/2024: Location of the proposed boreholes and modelled outlines. The yellow outline is for ground gravity. The whit outline is for ground magnetics. The white cross represent proposed borehole over the thickest part of the magnetic features . The black cross represent the location of proposed borehole over gravity



# AVAILABLE DATA FOR 2D SIZE MODELLING:PL0181/2024

## Ground gravity and airborne magnetics

Survey Method	Line spacing	Station spacing	Survey height
Ground gravity	100m	50m	N/A
Airborne magnetics	10m	~5m	25m
Ground Magnetics	100m	50m	N/A

## Derived Modelled parameters

Anomaly	Size (Ha)	DepthAm)	Vertical extent (m)
Ground gravity	24.9	20	210
Magnetics Western lobe	9.7	82m	91.5
Magnetics Eastern lobe	100m	90m	116.8

# ORAPA DIAMOND FIELD - PL345/2024

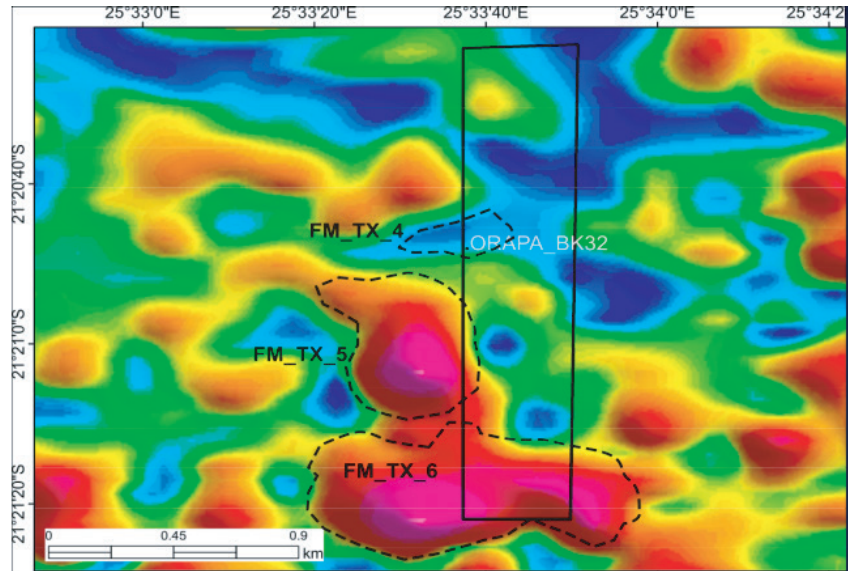
PL345/2024 that is located in close proximity to

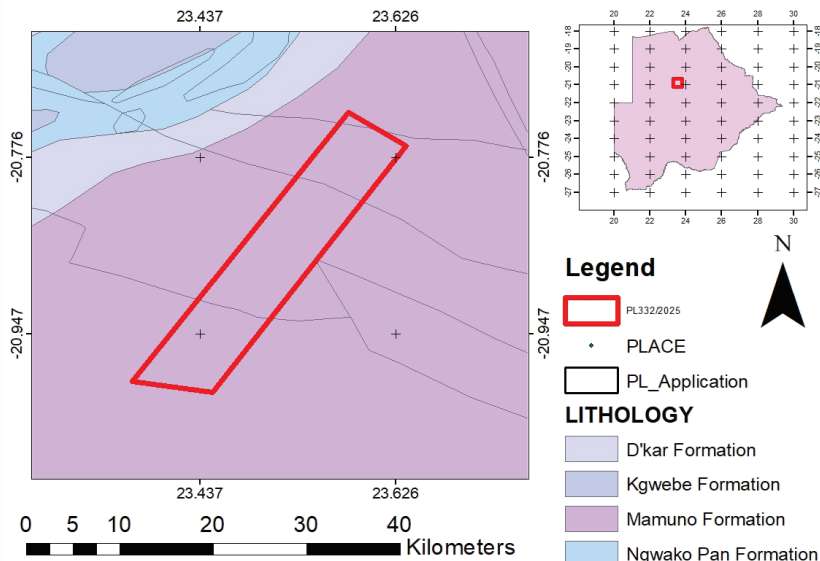
Debswana's Damtshaa Diamond mine.

- Commodity: Diamonds
- Tenure: 3 years (2024–2027)
- Prior Work: High level magnetic data review and re-interpretation conducted.

New discoveries defined through recent reinterpretations and modelling (FM\_TX\_5 and 6).

- Next Steps: Prospecting license hosts the known BK-32 kimberlite, confirmed to the western side boundary of the tenement. Further probing to define the targets for follow up.





## 2. Hainaveld Copper-Silver Project: PL0332/2025

- Location: Central Kalahari Copperbelt, near Maun
- Commodity: Copper-Silver
- Tenure: 2025-2028
- Size: 220.15km<sup>2</sup>
- Regional Geology: Borehole Z6756 confirms Cu-Ag redox interface
- Key Tenement: PL0332/2025 located 40km from MMG's Cupric Canyon's Khoemacau Copper Mine

Prior Work: None

3 YEAR PHASED WORK PROGRAM:  
Geochem+EM/IP, reconnaissance drilling ,  
step-out drilling

### 3. KCB COPPER - SILVER: PL0245/2025

Location: Ghanzi

Size: 165.42km<sup>2</sup> Regional Geology: D'KAR  
AND NGWAKO PAN FORMATION

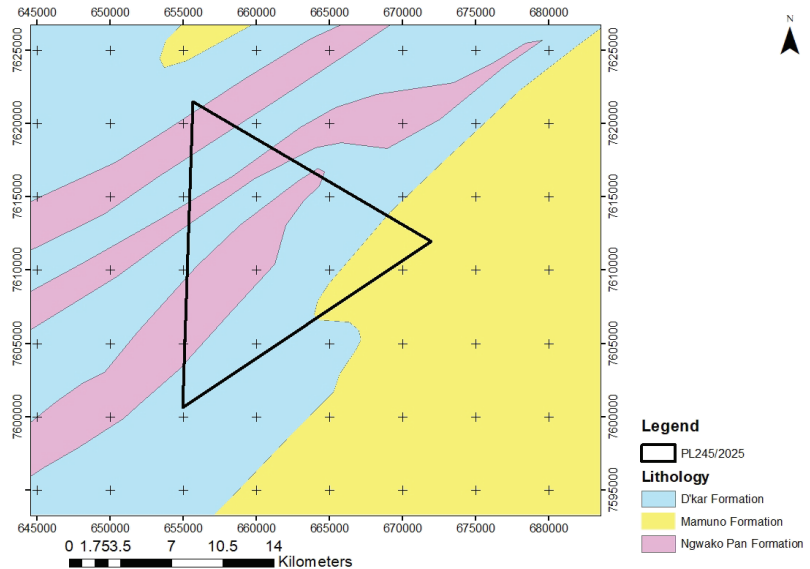
Commodity: Copper-Silver

Tenure: 2025- 2028

#### PRE EXPLORATION STAGE

#### KEY HIGHLIGHTS

Ngwako Pan & Dkar Formations: High-grade copper-silver mineralization (e.g., Zone 5N: 23Mt @1.9% Cu, 32g/t Ag). Synergy with Global Giants: Proximity to Sandfire, COBRE-BHP and MMG operations underscores the district's scalability and investor confidence.



( CONTINUATION )

BHP's A\$40M Investment in COBRE LIMITED (March 2025) on Kitlanya East tenement – which is boarded along PL0245/2025, sharing analogous geological pans and shear zones. MMG's Zone 5 (167Mt @2.1% Cu) – borders Sandfire's flagship project, highlighting the district's tier-1 potential.

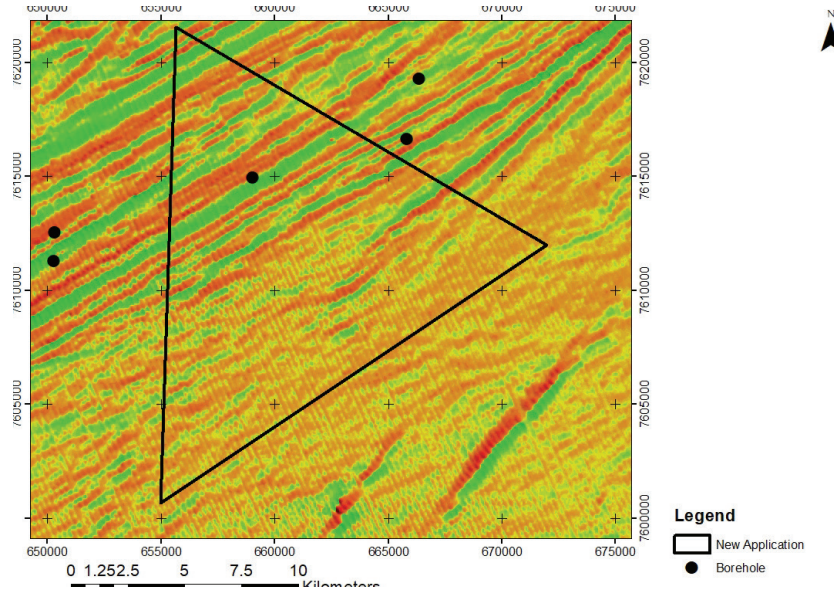
Targets deep-seated mineralization within the same complex, mirroring high-grade discoveries.

**CURRENT STATUS: HIGH-RESOLUTION GEOPHYSICAL SURVEYS UNDERWAY. PHASE 1 DRILLING PROGRAM PLANNED FOR Q2 2026**

Sediment-hosted Cu-Ag in Ngwako Pan–D'Kar Formations

Mapped Ngwako Pan formation and D'Kar formations

Structures in prospecting license with known mineralization extend into PL245/2025 Soil sampling, EM and AMT planned



## 4.LESABUKWE & MOLOMOLAPUDI CU-NI-AU: PL0122/2025

Commodity: Copper-Silver

Tenure: 2025-2028

Size: 228.15 km<sup>2</sup>

Historic 3.5% Cu and 1.2 g/t Au

Ancient copper workings in chloritic schists  
0.28 Ni reported by Da Heng Group  
Lesabukwe(Cu32): associated with granitised and  
sheared , chlorotic schists and gneiss. Ancient  
workings present in malachite bearing workings.  
Molomololapudi (Cu33): ancient Copper  
working in sheared biotite gneiss  
3-Year Plan: 1st year - Mapping, 2nd yeardrilling,  
3rd year- resource definition

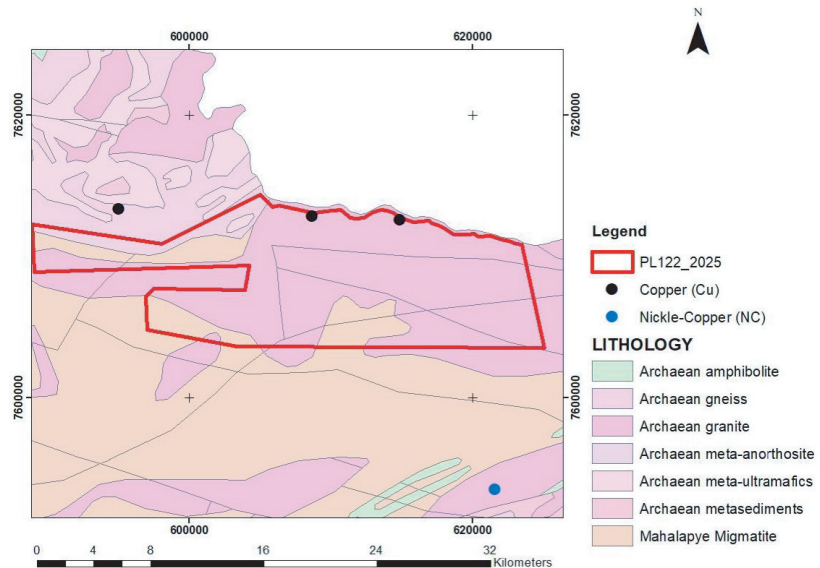


Figure 14: Geological map of PL12/2025  
with mineral occurrences



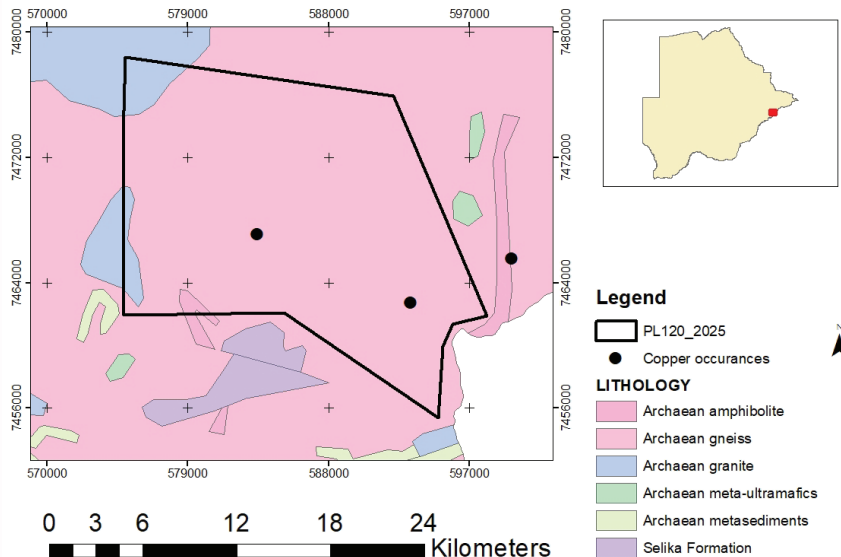


Figure 7: Geological map and location of PL120/2025 in Botswana.

## 5. Martins Drift Base Metal: (PL0120/2025)

- Location: Martins Drift, eastern Botswana
- Size: 338.2km<sup>2</sup>
- Commodity: Ni Cu,Cobalt
- Stage: Early Exploration Limpopo Belt, near Martins Drift
- 20km North of Sunnyside Nickel Copper Project.
- Cu26 & Cu27 copper occurrences
- Five geophysics anomalies similar to Mogophate anomalies

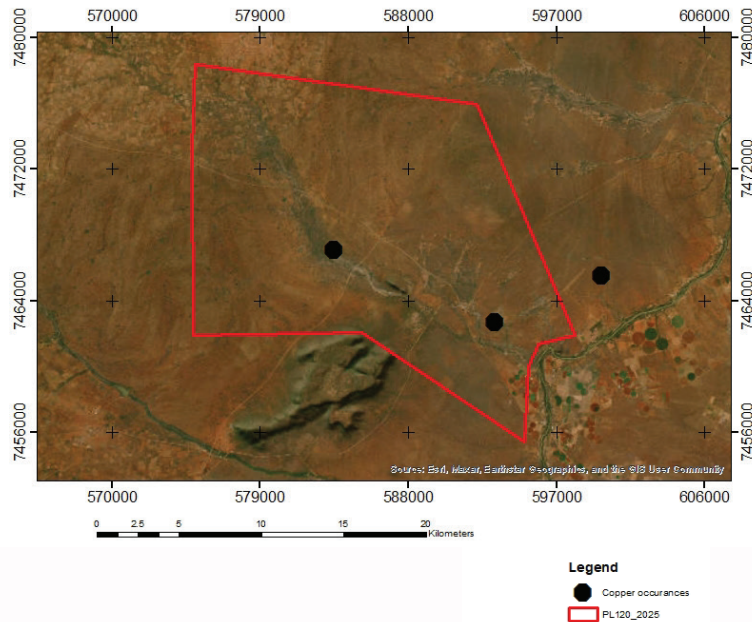


Figure 7: Geological map and location of PL120/2025 in Botswana.

- Year 1: Mapping/Geochem | Year 2: Drilling | Year 3: Resource definition
- Prior Work: Regional geophysics carried out Anglo American and De Beers highlighted conductor signatures similar to those in Sunnyside, Selebi Phikwe and Mogogaphate.
- Cu26: Copper in felsic gneiss Cu27: Copper in quartz breccia (700m strike length)
- Next Steps: Geological mapping, soil and rock sampling, time domain electromagnetics **planned for Q1 2026.**
- Shares key geological features with the Selebi-Phikwe base metal district
- Prior Work: Regional geophysics carried out Anglo American and De Beers highlighted conductor signatures similar to those in Sunnyside, Selebi Phikwe and Mogogaphate.

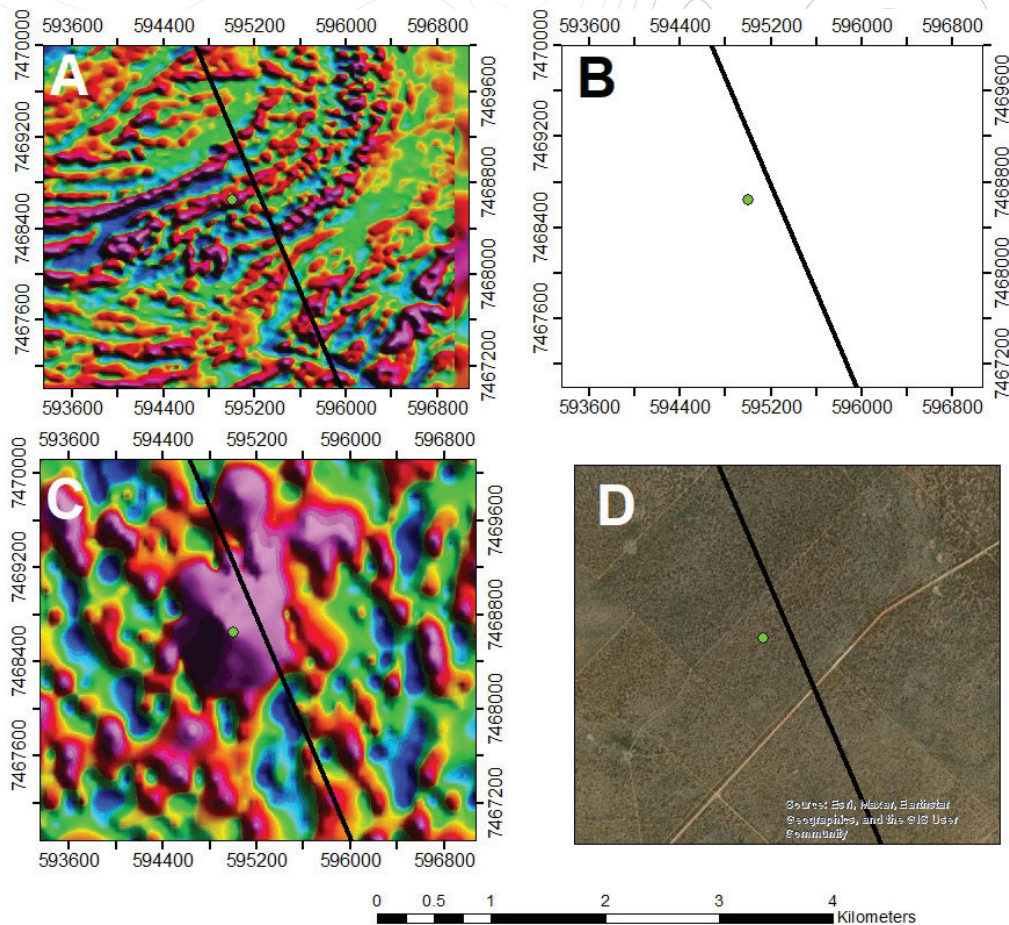


Figure 9: New target(T1) with A) magnetics data coverage, C) time domain electromagnetics data coverage and D) satellite imagery coverage.

## Legend

- T1
- Copper occurs
- PL120\_2025

## 6. TATI GREENSTONE GOLD PROJECT: PL0121/2025

- Size: 10.36 km<sup>2</sup>
- Commodity: Gold (Au)
- Tenure: 2025- 2028

Our Gold Project covers 10.36 km<sup>2</sup> southeast of Francistown within the Tati Greenstone Belt (TGB) — Botswana's premier Archean gold-producing terrane. The license hosts the disused Globe Gold Mine and is adjacent to the Map Nora (8.1 g/t Au) and Golden Eagle (1.44 g/t Au) deposits, providing a highly prospective geological setting within a known mineralized corridor.

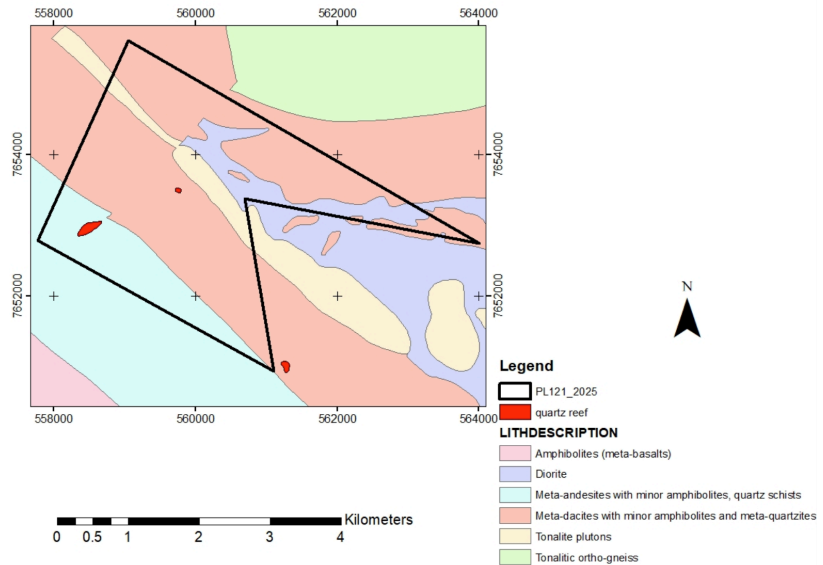


Figure 14: Geological map of PL12/2025  
with mineral occurrences

## STRATEGIC HIGHLIGHTS

- Located in the highly prospective Tati Greenstone Belt near producing mines
- Historical intersections up to 5.17 g/t Au and grab samples up to 26.5g/t Au
- Shallow oxidized and deeper sulfide mineralization – dual open-pit/ vunderground potential
- Excellent access and infrastructure near Francistown
- Early-stage investment opportunity with significant upside potential

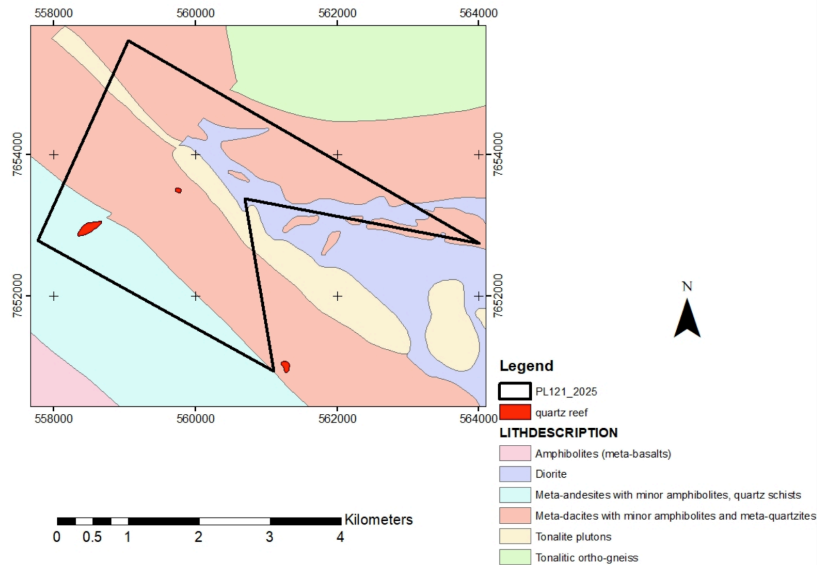


Figure 14: Geological map of PL12/2025 with mineral occurrences





Figure 2: Shaft at disused Globe Gold mine

## PL0121/2025

A Gold Frontier project

- Area: 10.38 km<sup>2</sup> | Francistown
- Globe disused shaft. ~25m deep
- Historic drilling up to 5.17 g/t Au; Grab samples 26.5 g/t Au
- Located close to the Historic Golden Eagle gold Mine and historic Map Nora gold Mine.

### **3-YEAR PLAN:**

**1ST YEAR TRENCHING 2ND YEAR  
DRILLING 3RD YEAR RESOURCE  
DEFINITION**



## PL0121/2025 GRAB SAMPLES



# THE OPPORTUNITY & NEXT STEPS

Advancing Three of Six High-Potential Projects Across Botswana's Premier Mineral Belts

## THE OPPORTUNITY

Falcon's portfolio provides diversified exposure to copper, gold, and diamonds across Botswana's premier mineral belts.

The Company's disciplined portfolio approach is designed to generate optionality across multiple development and capital outcomes while maintaining strong governance and disclosure standards.

### Gold – PL0121/2025 (Tati Greenstone Belt)

- Confirmed mineralisation including:
- 26.5 g/t Au historic outcrop
- 5.17 g/t Au trench/RC zone
- Multiple artisanal pits showing continuity of gold-bearing structures
- Strong opportunity for pilot mining / bulk sampling in 2026

### Copper – PL0245/2025 (Kalahari Copper Belt)

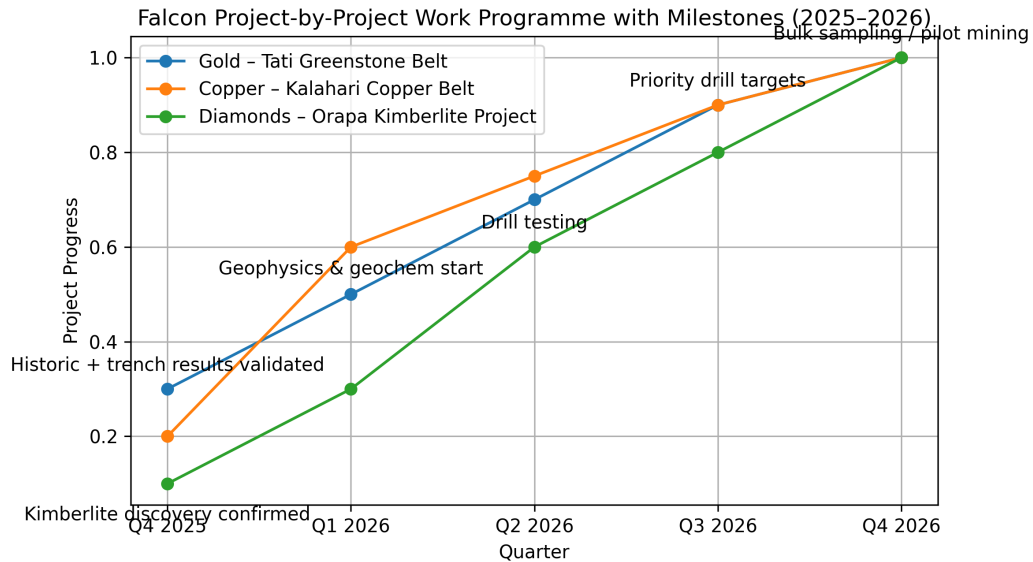
- Located next to Cobre/BHP Kitlanya East & Sandfire's T3–A1 corridor
- Early datasets indicate favourable D'Kar–Ngwako Pan structural targets
- Ground geophysics & geochem fully scheduled for Q1 2026

### Diamonds – PL0181/2024 (Orapa Kimberlite Project)

- 25–54ha mega-kimberlite discovered 2 km from Karowe Mine
- Geological model consistent with high-value, coarse-stone producing pipes
- Drill testing scheduled for early 2026

# PORTFOLIO PROGRESSION FRAMEWORK

## Next Steps: Project-by-Project Work Programme (2025–2026)





**Cell:** +267 248 4016 | +267 73 610 662  
+267 71 304 612 | +267 72 617 482

**Email:** [info@falconmetalresources.com](mailto:info@falconmetalresources.com)

**Website:** [www.fmrbotswana.co.bw](http://www.fmrbotswana.co.bw)